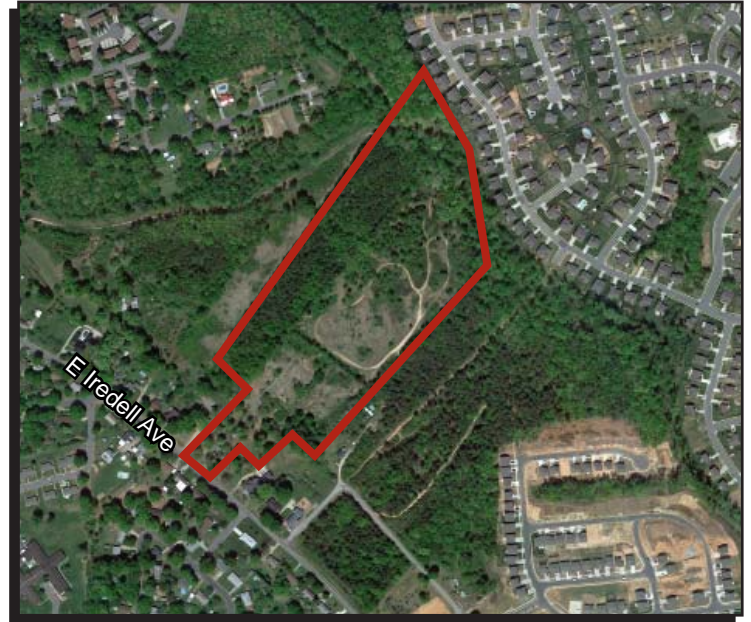
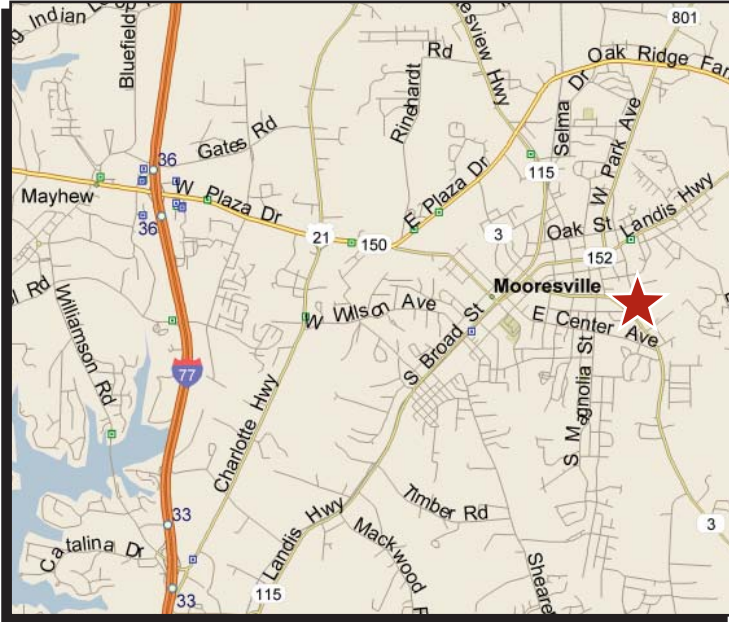


# LAND FOR SALE

## E. Iredell Avenue @ McLean Circle Mooresville, North Carolina



### ASKING PRICE

\$500,000

### ACCESS

E. Iredell Avenue

### ZONED

R-5

### SIZE

24.691 Acres

### COMMENTS

- Originally planned for 110 lots
- Approximately 100' of frontage on E. Iredell
- Some due diligence available to buyer
- Access to municipal water and sewer



**Piedmont Land Sales, Inc.**

**Don Pippin**

704-347-0105

dpippin@piedmontlandsales.com

1230 W. MOREHEAD STREET, SUITE 206 • CHARLOTTE, NORTH CAROLINA 28208 • (704) 347-0105 • FAX: (704) 347-0197

*Every effort has been made to provide accurate information but no liability is assumed for errors and omissions.  
Offering is subject to prior sale, lease or withdrawal without notice.*